

# MAGE

## Accelerate Your AI Journey



# Build AI into the very core of your data strategy

The pressure is on. Every enterprise needs to be an AI-first organization. Yet, building formidable AI capabilities presents its own unique set of challenges. Struggles to seamlessly merge diverse data sources, address biases, invest in unique data and AI training, ensure trust and transparency, and extract valuable insights hinder progress. So, how can you untangle the AI puzzle and unleash its full potential?

## Meet MAGE

MAGE empowers you to build your own AI models or use a library of pre-existing models to accelerate your time to market with new AI solutions. Going beyond being just a platform, it offers you a complete ecosystem of tools and services for end-to-end AI exploration. It orchestrates various technology stack components, allowing you to access the potential of data, algorithms, and computing power. With MAGE, the built-to-purpose platform, innovation becomes your way, insights your advantage, and data-driven decisions your edge.

## Deep capabilities for outstanding outcomes



Data Science

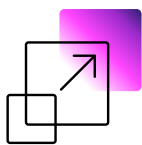


Applied AI

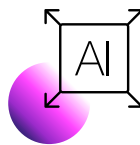


Data Engineering

## The Safety Assurance of Using MAGE



Robust  
Encryption



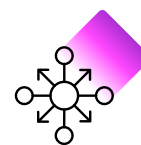
Ethical  
AI Framework



Comprehensive  
Compliance



Privacy-centric  
Architecture



Vigilant  
Security Oversight

# Features that turn an AI idea into a reality

Accelerating AI development with optimizations of the most popular industry libraries and open-source tools, MAGE's ever-evolving feature suite ensures that you build for relevance and impact on what matters.

## Component-Based Architecture with Data-Centric AI

- ▶ Innovative component-based architecture
- ▶ Data and AI at the core
- ▶ Transforms data into a valuable asset
- ▶ Enforces strong data governance protocols

## Robust MLOps/AIOps Framework

- ▶ Embeds an efficient CI/CD pipeline
- ▶ Proactive monitoring strategy
- ▶ Identifies data irregularities
- ▶ Data drift monitoring and alerts
- ▶ REST APIs for real-time scoring and usage

## Streamlined Data Transformation

- ▶ NLP based data transformation
- ▶ Rule based data transformation
- ▶ LLM-assisted
- ▶ Simplified field selection
- ▶ Automated transformation services
- ▶ Rich library of 60+ built-in processors

## Adaptable Industry Use Cases

- ▶ Accommodates any scenario
- ▶ Applies AI algorithms for predictions and classifications
- ▶ Precise data predictions
- ▶ Astute recommendations and classifications

## Versatile Data Adapter Framework

- ▶ Effortless data amalgamation
- ▶ Metadata-driven connectors
- ▶ Sets the stage for a unified data ecosystem

## Automated Exploratory Data Analysis (EDA)

- ▶ Auto EDA with NLP insights
- ▶ Visual representation of data correlations
- ▶ Quick visual analysis of columns
- ▶ Detects outliers, missing values, and more

## Intuitive Data Consumption and Visualization

- ▶ Data consumption layer for external system integration
- ▶ Transparent and interactive data depictions
- ▶ Inherent visualization strata
- ▶ User-friendly data exploration
- ▶ Copilot support

## Intelligent Data Ingestion

- ▶ Advanced data ingestion layer
- ▶ Language model (LLM) assistants
- ▶ NLP based data ingestion
- ▶ Rule based data ingestion
- ▶ Domain-specific querying for data retrieval
- ▶ Data Virtualization
- ▶ Native data connectors for various sources and formats

# Break new grounds with MAGE



Democratize data and analytics



Advance decision intelligence



Accelerate AI and ML innovation



Ensure data governance



Enhance efficiency, productivity and agility

# MAGE working its magic

Embodying innovation at its core, MAGE, the end-to-end AI Platform, redefines the AI landscape unlike any other platform, driven by its distinct features and functionalities that power standout performance.

## Enhanced Data Integration:

Single-click operations, powered by advanced NLP, streamline the entire data ingestion and transformation process for efficiency and accuracy.

## Targeted AI Model Development:

Rapid prototyping and deployment of custom AI models is facilitated by its modular, scalable architecture.

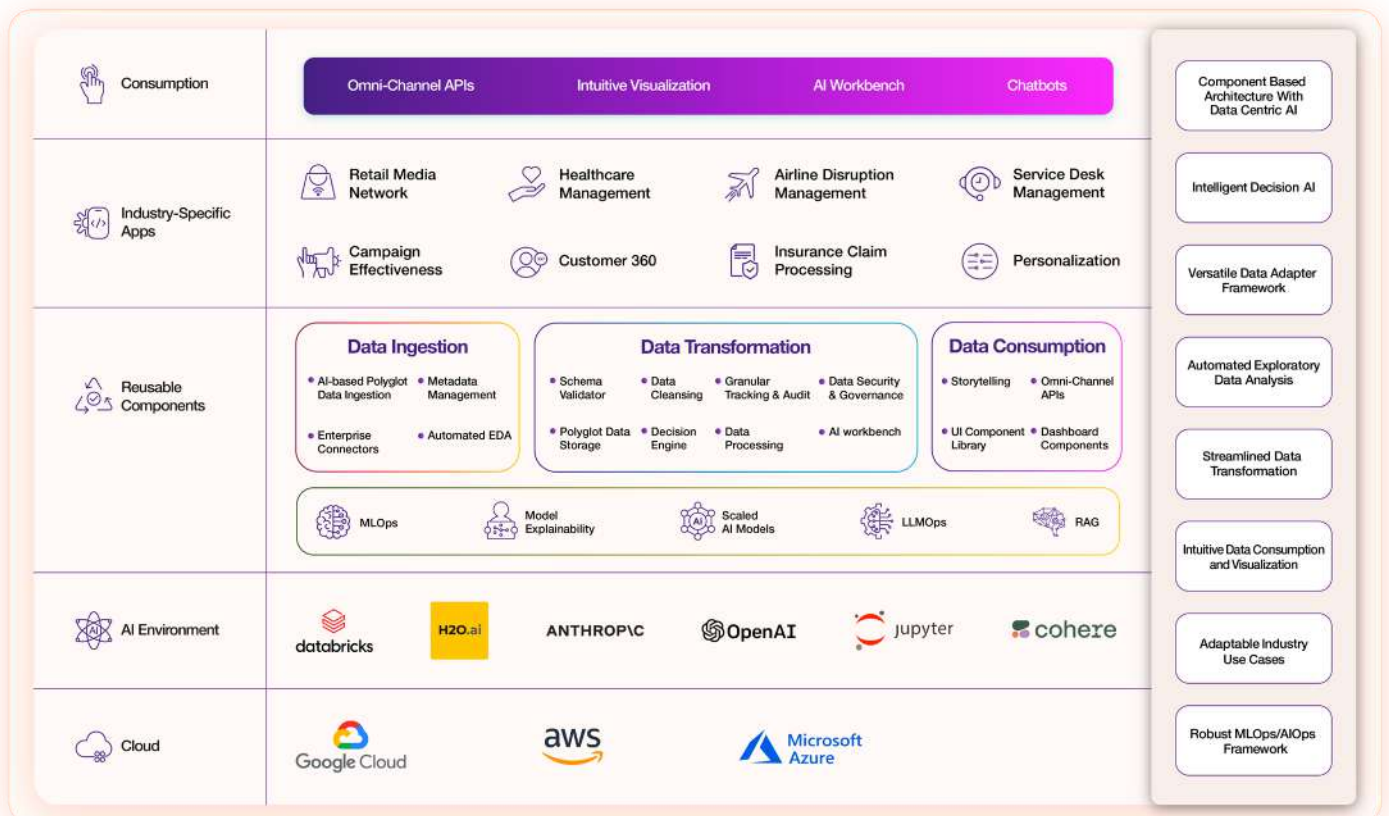
## Streamlined Integration:

A component-based ML Ops/LLMOps framework, infused with Responsible AI principles, simplifies both the creation of new models and the management of existing ones.

## Accelerated Solution Development:

A complete sandbox environment for the data journey, from ingestion to AI experimentation, fosters rapid solution innovation.

## The MAGE framework



# MAGIC in real business scenarios

## Retail

Leverage MAGE's capabilities in Retail Media Networks, autonomous store operations, fulfillment AI, demand forecasting, and more to redefine retail.



## Healthcare

Explore the AI care management model, patient risk scoring mechanism, care managers' dashboard, and real-time medical management that MAGE helps you build at speed and scale to improve care outcomes.

## Insurance

Discover intelligence in insurance, scaling underwriting automation, predictive pricing, claims management, and AI-driven upselling and cross-selling opportunities.



## Travel

Embark on a new-level growth journey by leveraging MAGE capabilities for flight delay prediction, delay propagations, self-check-ins, query handling, and personalized recommendations.

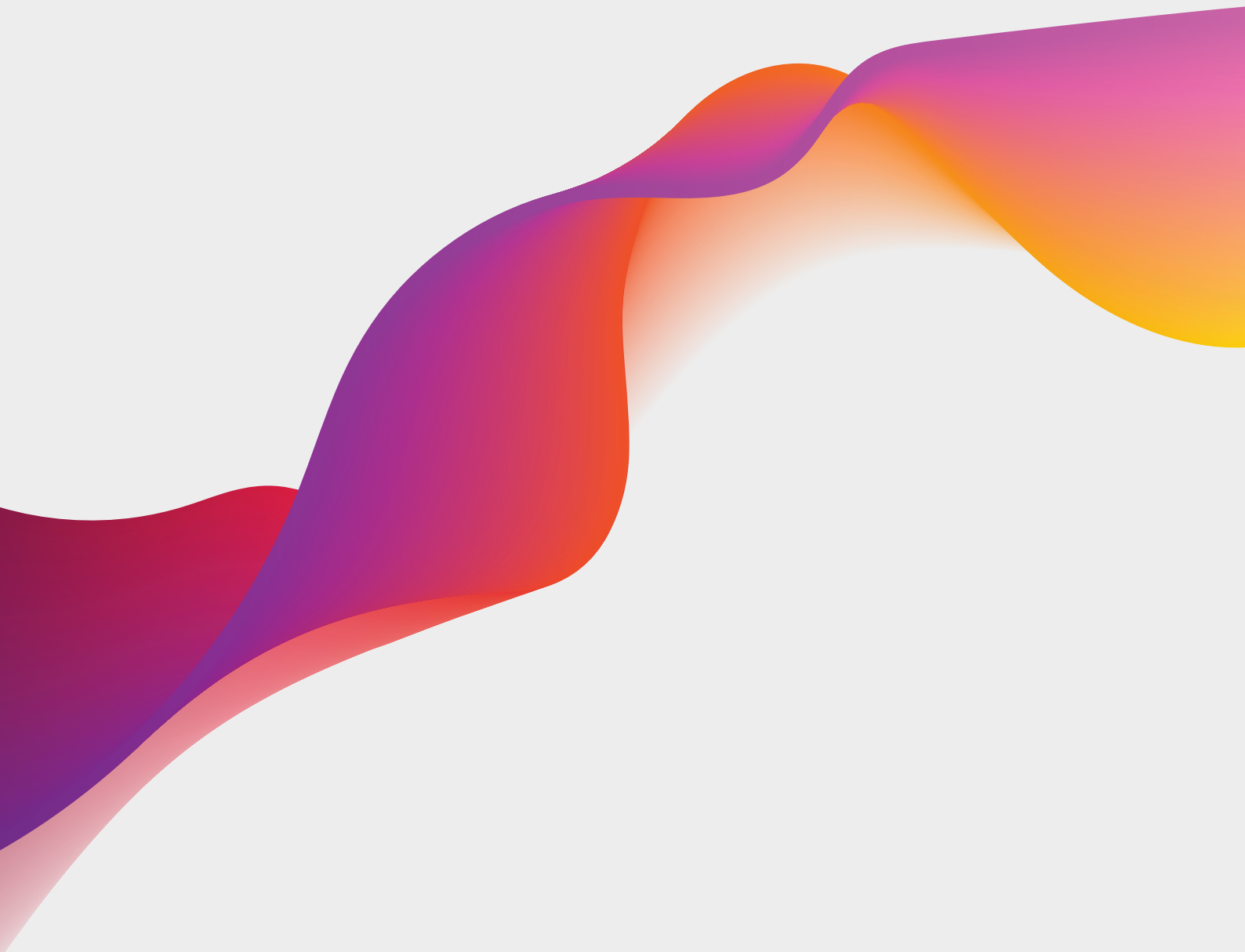
## Higher Education

Unlock a new era of academic excellence with our platform, harnessing AI to reimagine curriculum development, knowledge imparting, learning, and administrative productivity.



## Consumer Packaged Goods

Ignite innovation in the CPG sector with MAGE, leveraging AI for demand forecasting, supply chain optimization, marketing strategies, retailer engagements for RMN, shelf planning and consumer insights.



HTCNXT is an Enterprise AI solutions division reimagining customer experience and outcomes. We combine disruptive technologies, deep domain expertise, and our built-to-purpose platform to accelerate AI-led transformations for enterprises.

[info@htcnxt.ai](mailto:info@htcnxt.ai) | [www.htcnxt.ai](http://www.htcnxt.ai)